

Tracker Data Warehouse

www.TrackerSuite.com/DataWarehouse



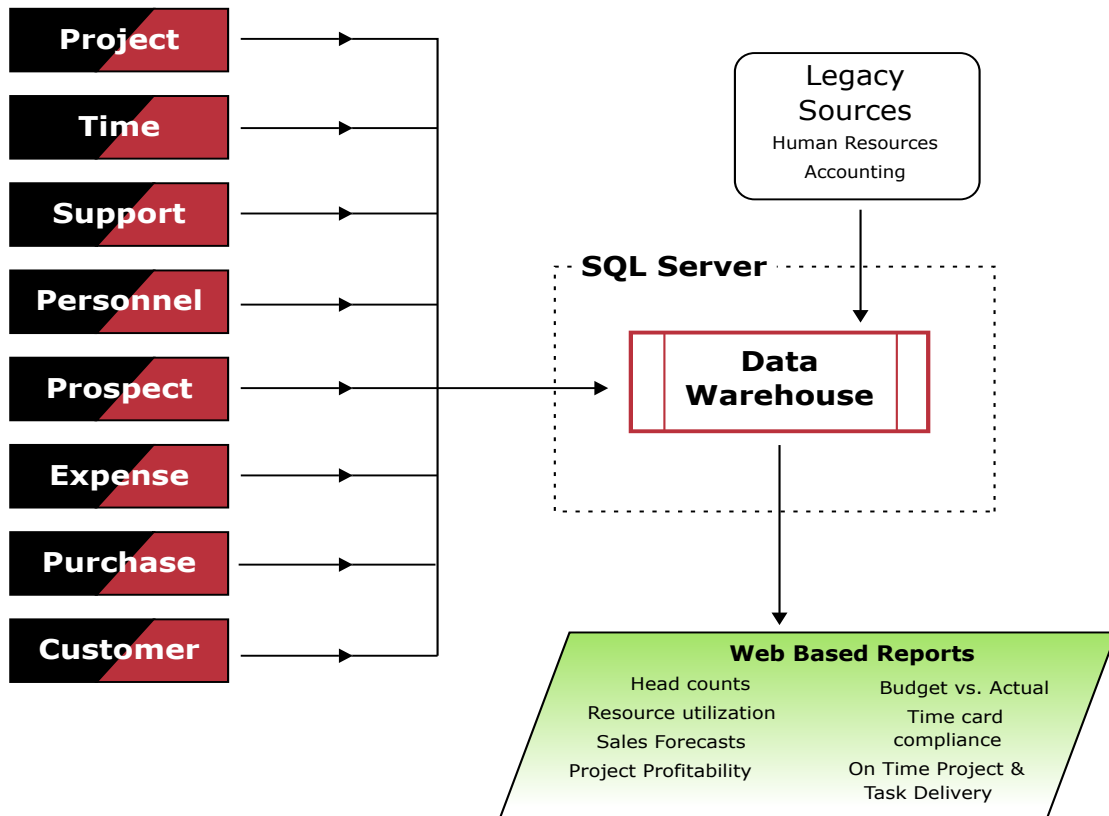
Leverage the data from your Project, IT, HR and Sales divisions for effective decisions

The **Tracker Data Warehouse** is a Web based reporting engine which uses the SQL Server as a back-end data store. The Tracker Data Warehouse provides users with simple, fast access to the metrics of their business efforts and performance.

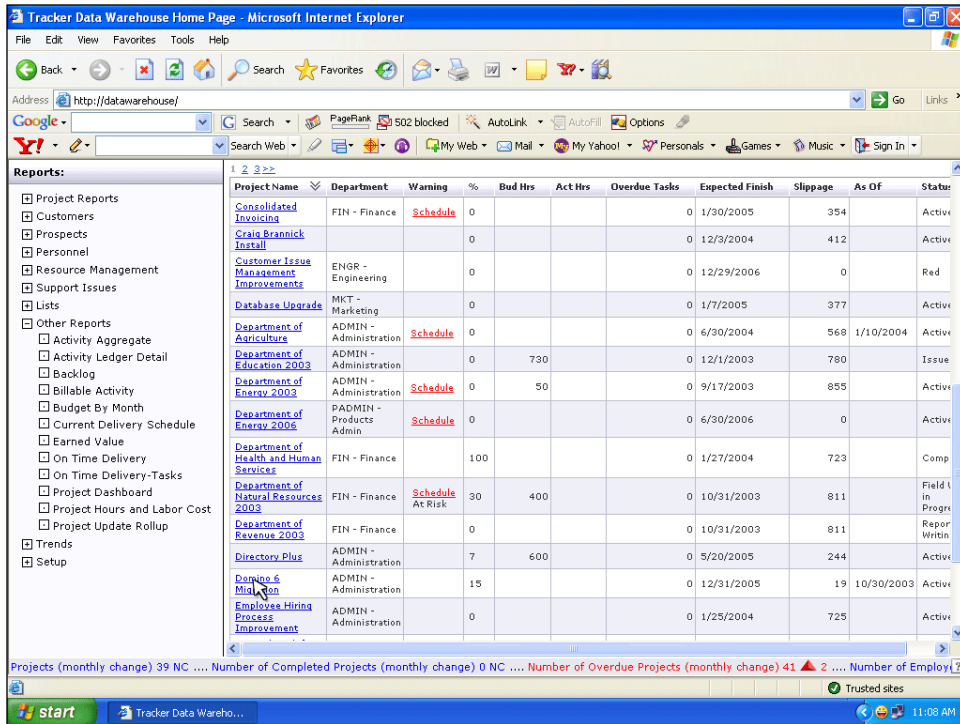
The Tracker Data Warehouse gathers data from all of the Tracker databases as well as legacy HR and accounting systems. It compiles this data into reports which users can manipulate dynamically through filters, pivot tables and drag-and-drop functions. These reports can be printed from the browser or exported to Microsoft Excel.

Users can save reconfigured reports as new report templates for later use with the click of a button. The Tracker Data Warehouse also includes a report editor for creating new, custom reports.

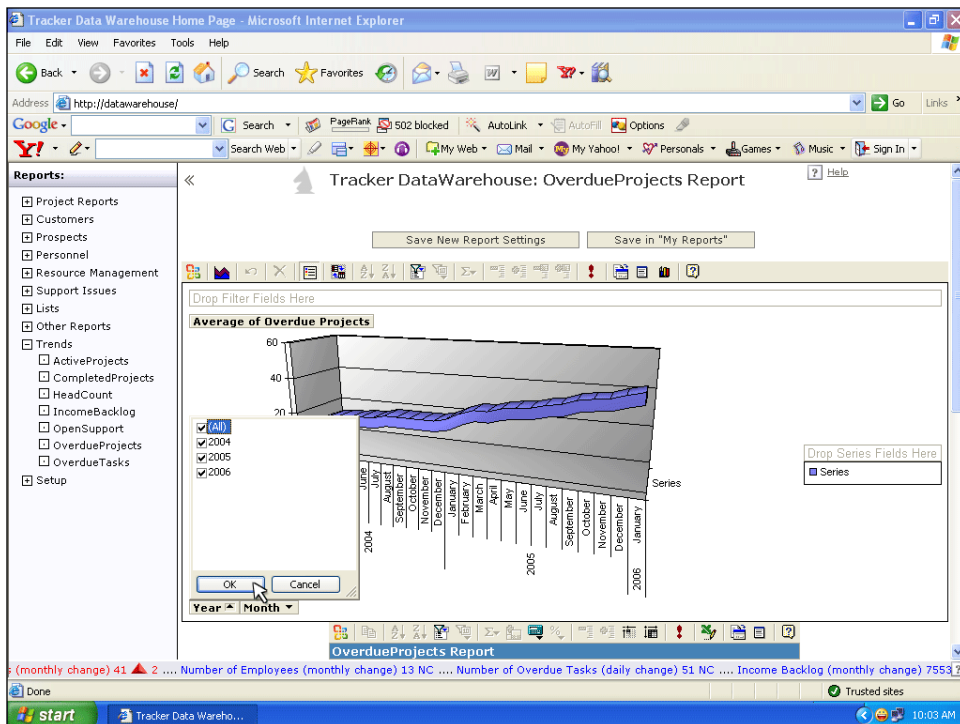
Through all-inclusive data collection, accessible reports which can be configured in increasing levels of detail, and simplified intelligence sharing, the Tracker Data Warehouse serves as a single point of access to business intelligence on every aspect of the enterprise.



www.TrackerSuite.com/DataWarehouse



Project Dashboard reports



Project Trend reports

Tracker Data Warehouse Home Page - Microsoft Internet Explorer

Address: http://datawarehouse/

Tracker DataWarehouse: Project Portfolio Report

Select Date Range: From: 1/1/2005 To: 12/31/2005 OR Current Month Requery

Save New Report Settings Save in "My Reports"

Project Portfolio Report

Drop Filter Fields Here

Project Status	Project Link	Timeliness	Budgeted Hours	Actual Hours	Budgeted Expense
Active			8,820	7,540	\$641,500.00
Complete			440	380	\$14,000.00
Field Work in Progress	Department of Natural Resources		800	760	\$0.00
	Group Benefits	Late	700	640	\$11,800.00
	Total	Total	700	640	\$11,800.00
	Total		1,500	1,400	\$11,800.00
Green	Improved General Ledger Reporting		325	270	\$0.00
	Oracle General Ledger		400	321	\$0.00
	Total		500	590	\$0.00
Initiate Project Audit			800	843	\$0.00
Issued			1,460	1380	\$11,900.00
Red			1,100	1203	\$0.00
Report Writing			600	560	\$0.00
Yellow			7,400	7654	\$131,675.00
Grand Total			23,345	22,141	\$810,875.00

Project Information: Number of Active Projects (monthly change) 39 NC ... Number of Completed Projects (monthly change) 2

Project Portfolio reports

Tracker Data Warehouse Home Page - Microsoft Internet Explorer

Address: http://datawarehouse/

Budget vs. Actual Report

Select Date Range: From: 1/1/2005 To: 8/31/2005 OR Year to Date

ReqName Requery

Save New Report Settings

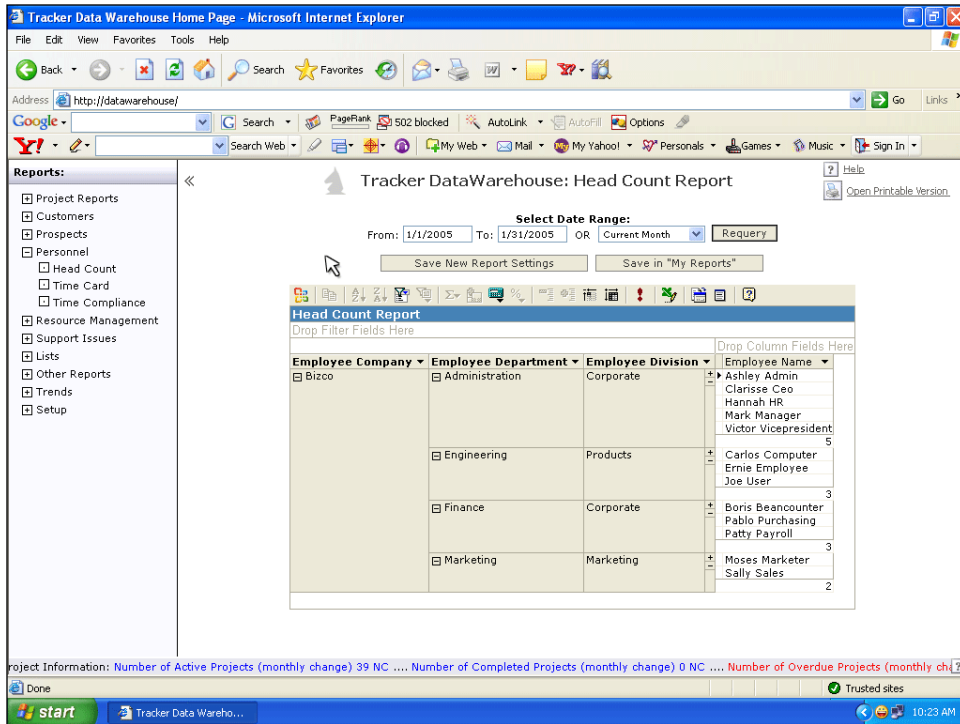
Budget vs. Actual Report

Drop Filter Fields Here

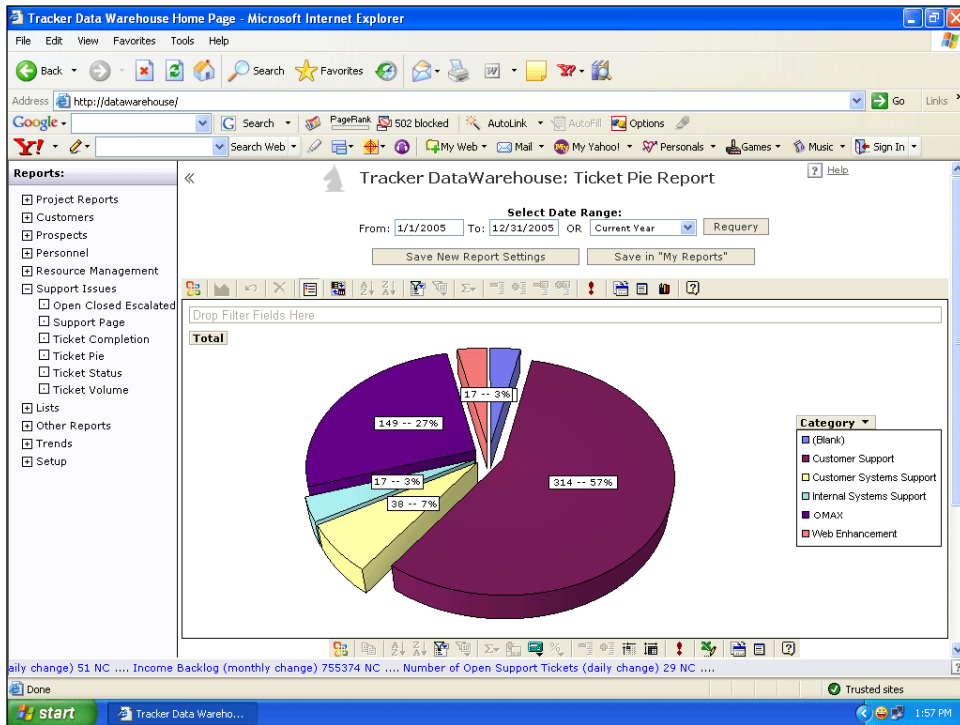
Project Code	Actual Income	Actual Time	Actual Expenses	Budgeted Income	Budgeted Time	Budgeted Expense
(Blank)	\$12,303.00	310	\$1,250.75	\$18,040.00	400	\$1,000.00
00124	\$23,210.00	560	\$560.21	\$25,320.00	520	\$2,000.00
01219	\$10,102.00	290	\$750.03	\$9,040.00	220	\$800.00
ALPHAWORKS	\$6,302.00	121	\$525.13	\$6,400.00	150	\$1,250.00
AMSTRDM-N	\$11,743.00	304	\$368.54	\$12,340.00	320	\$1,100.00
BWELL	\$12,403.00	325	\$402.12	\$11,231.00	310	\$1,400.00
BXCAGE	\$9,873.00	305	\$203.12	\$9,500.00	230	\$1,320.00
DEPUNT801	\$13,453.00	315	\$430.32	\$14,320.00	335	\$1,100.00
DVX	\$21,302.00	475	\$987.65	\$24,430.00	510	\$1,250.00
FARM-101	\$10,786.00	204	\$654.03	\$10,500.00	250	\$1,300.00
FLED	\$11,784.00	216	\$231.21	\$12,430.00	315	\$1,230.00
HUMACK72	\$7,900.00	100	\$345.22	\$8,000.00	215	\$950.00
ISIS	\$17,432.00	360	\$403.11	\$18,340.00	410	\$1,420.00
JVILLE2005	\$18,321.00	384	\$315.21	\$17,540.00	390	\$1,240.00
KADWELL	\$14,203.00	350	\$421.54	\$15,320.00	340	\$1,320.00

Number of Employees (monthly change) 19 ... Number of Overdue Tasks (daily change) 266 NC ... Income Backlog (monthly change) 2

Budget vs. Actual reports



Headcount reports



Support Ticket Pie reports

Tracker Data Warehouse Home Page - Microsoft Internet Explorer

Address: http://datawarehouse/

Tracker DataWarehouse: OCE 3 Report

Select Date Range: From: 5/1/2006 To: 7/31/2006 OR Last Month Requery

Save New Report Settings Save in "My Reports"

OCE 3 Report

Drop Filter Fields Here

Years Months

2006

Category	Open BOM %	New Tickets %	Closed/Esc %	Closed/Not Esc %	Open EOM
Business Admin	25 47.17%	10.00%	5 17.86%	3 23.08%	5
Customer Support	11 20.75%	40.00%	11 39.29%	4 30.76%	11
Internal IT and Phones	3 5.66%	0.00%	2 7.14%	3 23.08%	8
Mail-In Requests	12 22.65%	20.00%	4 14.29%	0 20.00%	9
Pre Sales	2 3.77%	30.00%	6 21.42%	3 23.08%	7
Grand Total	53 100.00%	100.00%	28 100.00%	13 100.00%	40

Open Support Tickets (daily change) 12 NC

Open/ Closed/ Escalated Ticket reports

Tracker Data Warehouse Home Page - Microsoft Internet Explorer

Address: http://datawarehouse/

Tracker DataWarehouse: Project Update Report

Select Date Range: From: 1/01/2005 To: 10/21/2005 OR Current Month Requery

Save New Report Settings

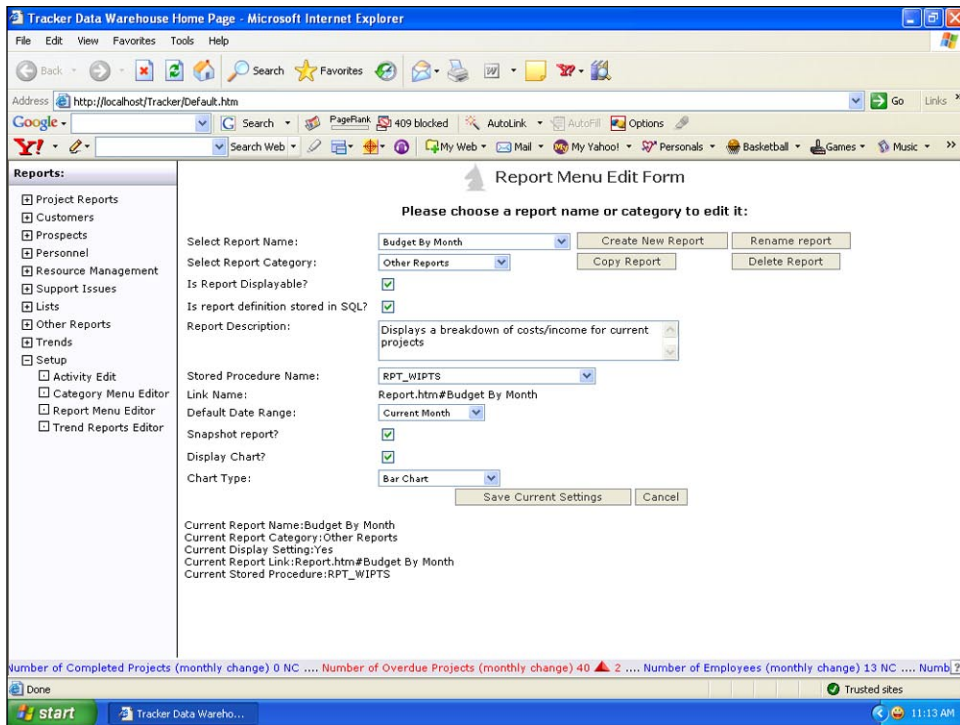
Project Update Report

Project Status

Project Name	Report As Of
Backup Server for Raleigh	10/30/2005
Charge Back Functionality	8/29/2005
Domino 6 Migration	10/30/2005
General Work for HR	7/31/2005
	8/15/2005
	10/13/2005
	11/4/2005
Group Benefits	8/18/2005
GSS Certification and Accreditation	10/31/2005
	11/4/2005
Infrastructure Upgrade	9/14/2005
	9/15/2005
Lottery	9/4/2005
New Executive Information System	7/1/2005
Oracle Accounts Receivable	8/19/2005
Oracle General Ledger	7/29/2005
Project Management	9/15/2005

Project Information: Number of Active Projects (monthly change) 41 ... Number of Completed Projects (monthly change) 0 NC ... Number of Overdue Projects (m)

Configure reports with pivot tables



Create customized reports